

SOLJET™PROIII NEW XC-540/XC-540W

SOLJET™ PROIII XC Series specifications		
Printing technology		Piezoelectric inkjet
	Width	260 to 1,371 mm (10.3 to 54 in.)
Media	Thickness	Maximum 1.0 mm (39 mil) with liner, for printing Maximum 0.4 mm (15 mil) with liner, for cutting
	Roll outer diameter	Maximum 180 mm (7 in.)
	Roll weight	Maximum 30 kg (66 lb.)
	Core diameter	50.8 mm or 76.2 mm (2 in. or 3 in.)
		Maximum 1,346 mm (53 in.)
Printing/cutting width *1		
Ink cartridges	Types	Roland ECO-SOL MAX™ INK
	Capacity	220 cc or 440 cc
	Colour	XC-540: six colours (cyan, magenta, yellow, black, light cyan, and light magenta) XC-540W: five colours (cyan, magenta, yellow, black and white)
Printing resolution (dots per inch)		
Cutting speed		
Blade force		
Blade offset		
Software resolution (when cutting)		
Distance accuracy (when printing) *2 *3		
Distance accuracy (when cutting) *3		
Repeatability (when cutting) *3 *4		
Alignment accuracy for printing and cutting *3 *5		
Alignment accuracy for printing and cutting when reloading media *3 *6		
Media heating system *7		
Connectivity		
Power-saving function		
Power requirements		
Power consumption	During operation	Approx. 1,600 W
	Sleep mode	Approx. 47 W
Dimensions (with stand)		
Weight (with stand)		
	Power on	Temperature: 15 to 32°C (59 to 90°F) [20±C (68±F) or more recommended], Humidity: 35 to 80% (no condensing)
	Power off	Temperature: 5 to 40°C (41 to 104°F), humidity: 20 to 80% (no condensing)
Accessories		

*1 The length of printing or cutting is subject to the limitations of the program.
*2 Using Roland specified media, print travel of 1m, temperature: 25±C (77±F), humidity: 50 %RH
*3 Not assured when the print heater or dryer is used.
*4 Using Roland specified media, loaded on the shaft, [PREFEED] menu item must be set to "ENABLE," with 25 mm or more for both right and left margins and 35 mm or more front margin, excluding expansion or contraction of the media.
Media 610 mm wide or over and 4,000 mm long. Media 610 mm wide or less and 6,000 mm long.
*5 Provided that media length is under 3,000 mm. Temperature: 25±C (77±F). Excluding possible shift caused by expansion/contraction of the media and/or by reloading the media.
*6 Using Roland specified media, data size: 1,000 mm in the media-feed direction, 1,346 mm in the carriage-movement direction. No lamination. Automatic detection of crop marks at 4 points when media is reloaded. During cutting, [PREFEED] menu item must be set to "ENABLE." Temperature: 25±C (77±F).
*7 Warm-up is required after powerup. This may require 5 to 20 minutes, depending on the operating environment. The preset temperature may fail to be reached depending on the ambient temperature and media width.

Heater and Blower (DU-540) specifications		
Dryer unit *8		
Power requirements	Voltage and frequency	Heating type (with blower fan), setting range for the preset temperature: 30 to 55±C (86 to 130±F) AC 100 to 120 V ±10 %, 50/60 Hz or AC 220 to 240 V ±10 %, 50/60 Hz
	Power capacity *9	5 A (100 to 120 V) or 3 A (220 to 240 V)
Power consumption		
Dimensions including printer		
Weight including printer		

*8 Warm-up is required after powerup. This may require 5 to 20 minutes, depending on the operating environment. Depending on the ambient temperature and media width, it may not reach a preset temperature.
*9 Be sure to check the breaker capacity and use separate power-outlets for the printer and the dryer.

Roland VersaWorks® system requirements	
Operating system	Windows Vista™ Ultimate or Business (32-bit edition), or Windows® XP Professional Service Pack 2, or Windows® 2000 Service Pack 4
CPU	Pentium 4, 2.0 GHz or faster recommended
RAM	1 GB or more recommended
Free hard-disk space	40 GB or more recommended

Options	Model	Description
ECO-SOL MAX™ Ink 440cc	ESL3-4MG	Magenta
	ESL3-4YE	Yellow
	ESL3-4CY	Cyan
	ESL3-4BK	Black
	ESL3-4LC	Light cyan
	ESL3-4LM	Light magenta
ECO-SOL MAX™ Ink 220cc	ESL3-MG	Magenta
	ESL3-YE	Yellow
	ESL3-CY	Cyan
	ESL3-BK	Black
	ESL3-LC	Light cyan
	ESL3-LM	Light magenta
	ESL3-WH	White
Cleaning liquid	SL-CL	1 pc
Blades	ZEC-U1005	For thick, reflective and fluorescent vinyl, 5pcs
	ZEC-U5025	For thick, reflective and fluorescent vinyl, 5pcs
Blade holder	XD-CH2	Blade holder with blade extension adjuster, made from aluminum

ABOUT WHITE INK

1. The pigment in white ink will settle in the cartridge and ink flow system.
2. Due to the nature of white ink, you must shake the cartridge before each use and perform periodic maintenance to prevent clogged nozzles.
3. Some colour shift may occur when printing CMYK over white ink.
4. White ink offers less longevity than CMYK and is affected by environmental conditions.



SOLJET™PROIII
NEW XC-540/XC-540W
54" Inkjet Printer/Cutter

ISO 14001:2004 and ISO 9001:2000 Certified

Roland pursues both environmental protection and continuous quality improvement. Under the philosophy of preserving the environment and human health, Roland DG is actively working to abolish organic solvents in production, to reduce and recycle waste, to reduce power use, and to purchase recycled products. Roland DG constantly strives to provide the most highly reliable products available.

Roland reserves the right to make changes in specifications, materials or accessories without notice. Your actual output may vary. For optimum output quality, periodic maintenance to critical components may be required. Please contact your Roland dealer for details. No guarantee or warranty is implied other than expressly stated. Roland shall not be liable for any incidental or consequential damages, whether foreseeable or not, caused by defects in such products.
PostScript is a trademark of Adobe Systems Incorporated. All other trademarks are the property of their respective owners.



www.rolanddg.co.uk

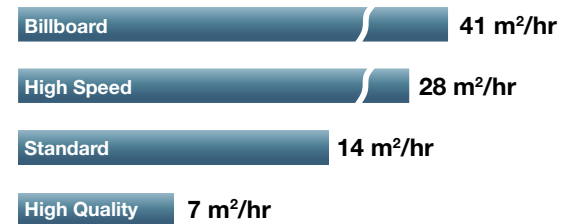


New XC-540 raises the standard for quality and productivity

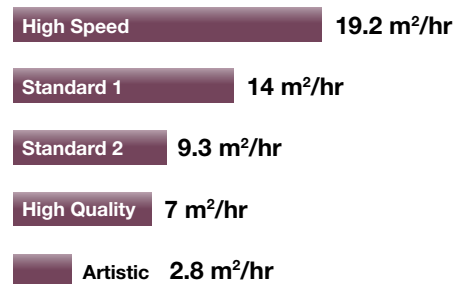
The new **XC-540** takes quality and productivity to the next level with a host of advanced features, including revolutionary new Roland Intelligent Pass Control technology for faster production and better overall imaging. With the **XC-540**, Roland has integrated its industry acclaimed Print&Cut technology into one streamlined device, supporting hundreds of media options for outstanding print quality.



• Throughput on banner



• Throughput on vinyl



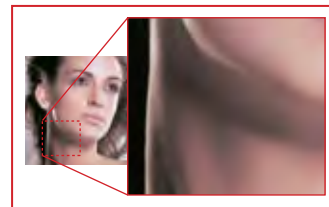
*Photo: New XC-540 with optional DU-540

Innovative

Roland's 3-Dimensional technology enhances print quality and productivity

Roland Intelligent Pass Control is a 3-dimensional system that precisely controls ink firing at the edge of each pass to virtually eliminate banding and deliver the right density for each specific media. As a result, the XC-540 prints unmatched image quality overall with smoother gradations and flawless solid colours in every print mode. Because Roland Intelligent Pass Control optimises print quality at high speeds, the XC-540 now achieves twice the productivity in Standard print mode on vinyl.^{*1}

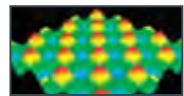
^{*1} Print speeds vary from 37% to 100% faster than the previous model depending on the media and print mode selected.



Smooth gradations across shaded areas with Roland Intelligent Pass Control



Gradations in shaded areas without Roland Intelligent Pass Control



Conceptual diagram of the 3-dimensional control system

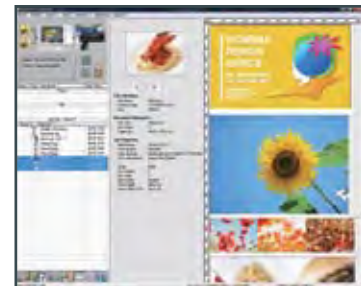


Close up of the precision ink firing pattern

Powerful

Print rich, vivid, on-target colours effortlessly

Roland's own advanced RIP software is packed with features for the ultimate in colour management, ease of use and productivity. Select the Max Impact™ preset for the rich saturated colours and photorealistic images you need to create high-impact outdoor signs and banners. Rely on the Roland Color™ system for precision spot colour matching with powerful reference tools that make communication with your clients easy. With VersaWorks®, you are always up to date thanks to Roland@NET, which offers more than 150 ICC profiles and automatically updates your system with the latest software version.



RIP & PRINT MANAGEMENT SOFTWARE
Roland VersaWorks®

Versatile

Print & contour cut for truly custom results

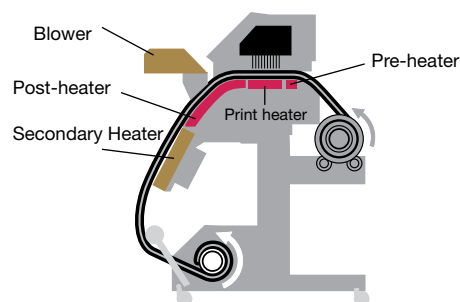
Roland's integrated Print&Cut technology streamlines your production environment and adds value to every graphic you produce. With this efficient, automated system, you can produce print/cut graphics of virtually any shape on one device for maximum productivity. Give your customers the ultimate in customisation with truly unique labels, decals, signs and point of purchase displays. Operate the XC-540 as a printer, cutter or printer/cutter for added versatility.



Productive

Powerful tri-heater system accelerates production

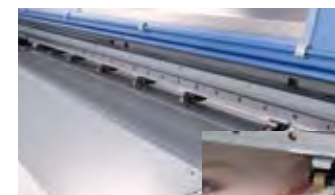
A built-in tri-heater system increases media receptiveness for maximum ink brightness and fastness. The heater and blower immediately bond ink to media at even the highest speeds for greater productivity.



Precise

Heavy-duty media feed and tracking system for flawless results

Roland media movement technologies are designed and constructed for precision media feeding and tracking through the longest unattended production runs. Our heavy-duty take-up system and media flanges work with four media stoppers positioned on the media shafts to support large media rolls weighing up to 30kg. Pinch rollers and grit rollers, plus extended built-in media edge clamps, add stability and prevent media curling and ragged edges.



Adjustable rubber hubs securely grip the media roll from within.

Advanced

Dense, rich colour, fast drying and scratch resistant

ECO-SOL MAX™ is Roland's most advanced eco-solvent ink, offering exceptional colour density and gamut. ECO-SOL MAX™ ink is highly durable, fast drying, scratch resistant, easy to handle and virtually odour free. Choose from 220cc or 440cc cartridges.



Efficient

Low maintenance system saves time, ink and running costs

Roland's automated intelligent maintenance system comes standard on every XC-540. This technology-driven system conserves ink by eliminating the need for daily manual maintenance procedures. The new XC-540 further reduces ink consumption through an efficient start-up process that allows the printer to go directly into production after the power is switched on. These and other efficiencies can save you up to 12 ink cartridges per year compared to the previous model when printing on vinyl in High Speed and Standard print modes.^{*2}



Print Mode	220cc Cartridges saved
High Speed	10
Standard	12

^{*2} Test conducted by Roland DG under the following conditions: printed on SV-GG media with the XC-540 and Roland VersaWorks® using ECO-SOL MAX™ inks in CMYK+LcLm. Printed image and size: SCD of Japanese Standards Association (ISO N5A), 1118.0 mm x 894.4 mm (44.02" x 35.21")

Communicate your message in virtually any size, shape and colour



Outperform the competition with profitable white ink applications



6 Colours
CMYK+LcLm

SOLJET™PROIII
NEW XC-540



White + 4 Colours
W+CMYK

SOLJET™PROIII
NEW XC-540W

^{*1} The take-up system does not support contour cutting or white ink printing applications